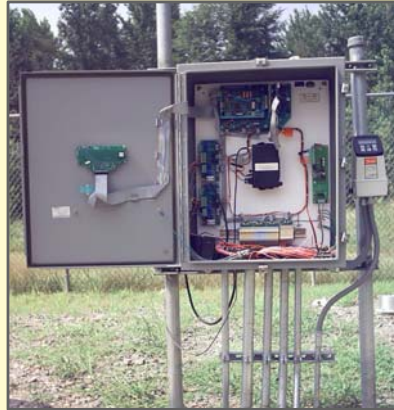




DEXTER FORTSON ASSOCIATES, INC.

5511 Powder Plant Lane, B'hm, AL 35022



SCADA, Telemetry Monitor & Control Systems

800-239-4890

Water

Wastewater

Environmental

Natural Gas

Electrical

Industrial

Irrigation

www.dfa-inc.com

sales@dfa-inc.com



Dexter Fortson Associates, Inc.

5511 Powder Plant Ln • Birmingham, AL 35022 • (205) 432-2700

Service - Reliability - Value

Our mission is to provide clients with reliable, cost-effective products and services from design through installation at a reasonable profit using a highly skilled team with experience, knowledge, and integrity.

<u>Table of Content</u>	<u>Page</u>
History – Dexter Fortson Associates, Inc. (DFA)	1
DFA Products	2
SCADA Cost Savings	3
System Control Computer	5
Area Control Remote Terminal Unit (A-RTU)	7
A-RTU Features	9
RTU Models, Specifications	10
SCADA Software Screens	11
SCADA Report Software	15
SCADA Report – Print Daily	16
DFA System Location Map	17
DFA Customer List	19

Quality Made in the USA

DFA PRODUCTS & SERVICES



DEXTER FORTSON ASSOCIATES, INC.

SERVICE · RELIABILITY · VALUE

CONTACT US

TOLL FREE

(800) 239-4890

TELEPHONE

(205) 432-2700

FAX

(205) 491-4751

WEB PAGE

WWW.DFA-INC.COM

E-MAIL

SALES@DFA-INC.COM

HOME OFFICE

**5511 POWDER PLT LN
B'HM, AL 35022**

ORIGINAL EQUIPMENT MANUFACTURER (OEM) - HISTORY

In 1982 William H. Dexter and Andrew W. Fortson founded Dexter Fortson Associates, Inc. in response to the service needs in the utility, manufacturing, and mining industries. Initial operations consisted primarily of design and installation of major electrical power systems, electric power substations and power line construction. As demand grew, custom electronic research and development and manufacturing launched DFA into the high tech information and control market.

DFA SCADA and Radio Telemetry Monitor and Control Systems are installed across the United States in water, wastewater, natural gas, electrical, environmental, industrial and irrigation applications. All of the

DFA telemetry systems vary according to the application and the customer's specifications, but the basis of each system is DFA's programmable Remote Terminal Unit (RTU) that allows all required parameters to be observed, monitored, logged, and controlled.

DFA has established a long tradition of technical know-how in the design, engineering, manufacturing, and turnkey installation of SCADA and Radio Telemetry Monitor & Control Systems.

DFA is committed to prompt service, reliable system performance and customer satisfaction with every installed system. Talk to our customers listed in the back of this bro-

chure about our after-sale service, reliability and the value delivered by the DFA Telemetry Monitor & Control System.



Lift Station Control with DFA Remote Terminal Unit.

APPLICATIONS

- Water
- Wastewater
- Environmental
- Natural Gas
- Electrical
- Industrial
- Irrigation

DFA REMOTE TERMINAL UNIT (RTU) - UTILITY GRADE

The modular designed DFA Remote Terminal Unit (RTU) allows upgrades or expansion and works with a wide range of external devices from various vendors. Data is transmitted by radio, hardwire, telephone, cellular, fiber optic or Internet.

All DFA RTUs are capable of "peer to peer" communication

and can "store and forward" messages— i.e., transfers messages to and from other RTUs in the system or functions as a repeater.

Programmable and configurable, the DFA RTU can directly control site processes, serve as an Area Controller for other sites or accept and execute

commands from a System Control Computer (SCC).

Each utility grade RTU has a battery backup system designed for continued operation during power outages and protects inputs and outputs against surges and spikes.



**UL508A CERTIFIED
PANEL SHOP**

MANUFACTURED PRODUCTS

- Area Remote Terminal Unit (A-RTU)
- Remote Terminal Unit (RTU)
- Auto Dialing Alarm System
- Synthesized Voice Dialer
- Radio Modem
- Radio Repeater
- Motor / Pump Control Panels
- Local Controller Such as Pressure
- Electrical Panels & Controls to UL specs. UL Certified if required.
- Custom Circuit Boards



Programmable & Configurable Remote Terminal Unit

TECHNICAL DIVISION – PRODUCTS & SERVICES

- Manufacturer / Contractor for SCADA / Radio Telemetry, Monitor & Control Systems
- System Design, Analysis, & Integration
- Local & Remote Monitoring including Security Monitoring
- PLC Programming
- SCADA Software - Stand Alone or Client / Server
- SCADA Data Report Module
- or Web Based Reporting
- HMI Software Training
- Radio Path Analysis & FCC Licensure Coordination
- Turn-key Installation & Startup
- SCADA Software Remote Support Available 24/7/365
- SCADA Electronic Field Tech Remote Support Available 24/7/365



POWER DIVISION – PRODUCTS & SERVICES

- Design & Installation of Power Substations - Transmission or Distribution
- Power Line Construction
- Electrical Contracting

OF INTEREST!

- PC-based controls featuring Microsoft Windows® operating systems
- National Instruments LabVIEW® graphics
- Industry standard warranties
- Non-Proprietary
- Open Architecture

SCADA/Telemetry System - Operating Costs Savings!

SCADA, an acronym for Supervisory Control and Data Acquisition, is the remote control and/or monitoring of devices such as pumps, valves, pressure transducers, etc. and the acquisition and transmitting of data from a remote location to a central point where the data is recorded or analyzed. For example, flows, pressures, and tank levels are displayed at a System Control Computer.

Programmed Logical Controllers (PLCs) or Remote Terminal Units (RTUs) perform the control or monitoring functions at the remote site and are monitored/supervised by a centrally located PC usually referred to as a System Control Computer (SCC) that has been tasked with Human Machine Interface (HMI) software that graphically depicts each remote site's monitor and control algorithm.

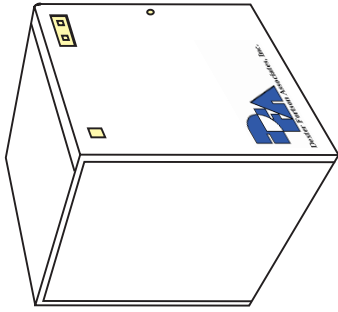
With no increase in staff, many utilities find that services improve and costs decrease after the purchase of a Telemetry/SCADA Monitor & Control System due to more efficient daily management of the system.

The most common cost savings received from a SCADA/Telemetry Monitor & Control System are as follows:

<u>Central Data</u>	Sites that are monitored and controlled by a Telemetry System log and chart information at a central computer for later use. This information could include turbidity, meter readings, run times, voltage, pressures, chlorine, etc. This data can assist equipment maintenance by showing changes in equipment functioning at a remote site.
<u>Down Time</u>	With a Radio Telemetry Monitor and Control System, down time is greatly reduced with the elimination of down lines, cut lines, unmarked lines, etc. There is no waiting time for one or more phone companies to find and repair problems.
<u>Early Warning</u>	A Voice Dialer alerts appropriate personnel when monitored points fall outside of the Telemetry System's preset operating parameters. This early warning gives time to react before a spill or overflow, empty tank, or other operational problem occurs. With the information provided by the computer or voice dialer, a timelier course of action can be developed.
<u>Electrical Cost</u>	Operators are given the capability to turn pumps ON/OFF from a centralized location at any given time. This allows for the operation of motors during "off peak" time which can greatly reduce "peak" power demand cost.
<u>Storage</u>	Operating parameter changes result in the system storing more water.
<u>Labor</u>	With a Telemetry Monitor & Control System in place, overtime is greatly reduced by giving the operators the ability to monitor and control the entire system from the office, home, or even their vehicles. Hours of driving time are replaced by seconds by viewing the computer screen or hearing alarm conditions via a Voice Dialer.
<u>Maintenance</u>	A computer screen displays motor run times, low voltage, power outage, operating trends, etc. Pumps can be turned OFF/ON without anyone physically going to the site. When power is restored, the site can be switched to the automatic mode which reduces low voltage starts and pump cycling.

(continued – next page)

<u>Metering</u>	Operators are capable of reading meters located at a remote site from the central computer. Flow rates can also be monitored with alarms. If these rates are too high or too low, the system will alert appropriate personnel.
<u>Mileage</u>	Vehicle usage is greatly reduced because the sites can be viewed on the computer.
<u>Operations</u>	The system operating parameters are easily changed as demand changes.
<u>Pressure Points</u>	Pressures are constantly monitored at lines, tanks, and pumping stations. The operator can view actual pressures or the associated percentage level (tank) of the pressures. Pressures are measured at various locations throughout the system to warn of any problems.
<u>Charts and Reports</u>	Simply touching a button produces charts, reports, and trends. The information may be viewed in different formats such as daily, weekly, monthly, and year-to-date. Information can be passed to other applications. Spreadsheets and "what-if" scenarios become easier and less time consuming which helps activities such as planning.
<u>Spills</u>	Wastewater spills are greatly reduced with telemetry in conjunction with controls that may currently exist in control panels. The continuous monitoring of floats can alert personnel of problems before a spill occurs. This will give operators time to correct these problems.
<u>Telephone Bills</u>	With radio telemetry, the monthly fixed cost of leased or dedicated phone lines are eliminated lowering expenses and improving cash flow immediately. The monthly costs of leased phone lines are often \$50 to \$150 per site.
<u>Water Savings</u>	Unaccounted for water is reduced due to better control of pumps. Tank overflows, line breaks, etc., are the main causes of unaccounted for water loss. With telemetry, these losses are often reduced by 50% by monitoring the entire system 24 hours a day. This saves the cost of approximately \$1 per thousand to put treated water into the system.



Base Radio Modem Cabinet
 Battery Back up
 Power Supply
 Radio, Radio Modem
 Lightning Arrester
 Dialer Board (Optional)
Wall Mounted

System Control Computer Hardware & Software



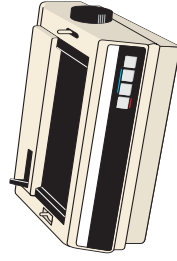
Synthesized Voice Telephone Alarm
 Dialer Card Addition (Optional)
 16 Numbers, 2-Page List
 Configurable



CD-RW for Data Back-up



56KB External Data Modem with
 Remote Access Software

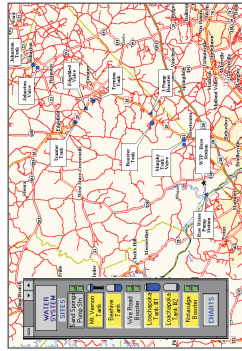


Dot Matrix Printer
 for Reports or Other
 Printer as required

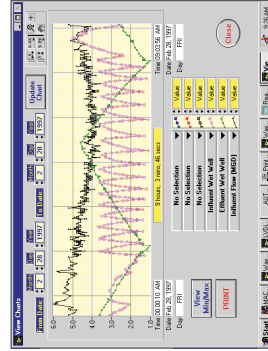


UPS for Battery Backup

Pentium IV 2.80 GHz
Dell Opti-Plex GX270
 40GB Hard Drive, 512MB RAM
 2 USB Ports, 1 Serial, & 1 Paralle Port
 3.5 inch, 1.44MB Floppy Drive
 40X CD-RW Drive, 32MB video
 19" Color Monitor, 104 key Keyboard
 2-button Mouse with scroll, 2 PS-2 Ports
 Microsoft Windows XP® Professional O/S
 HMI - National Instruments, LabVIEW® Language
 Symantec PCAnywhere® Remote Access Software



Utility System Map Screen & RTs
 Control Panel



Event Driven Charting Screen

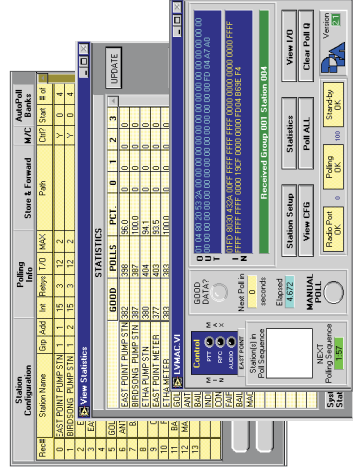
Report Type: **Summary Reports**

Report: **Daily C. Weekly C. Monthly C. Yearly C.**

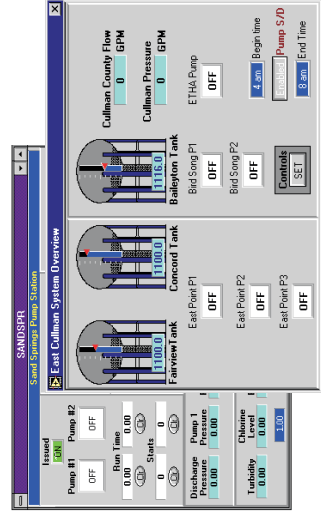
Period: **Hourly** Start: **01/01/01** Day: **01** End: **12/31/01** Month: **01** Year: **01**

Operator	Report	PRESSURES	3:22 PM
SITE	HWY 19	CH 72	
DESC.	INLET	OUTLET	
UNIT	Avg PSI	Avg PSI	Avg PSI
TIME	12:1 AM	77.93	67.77
	1:2 AM	77.11	68.11
	2:3 AM	76.12	69.64
	3:4 AM	77.93	67.77
	4:5 AM	77.93	67.77
	5:6 AM	76.12	70.23
	6:7 AM	77.33	77.33
	7:8 AM	76.12	76.12
	8:9 AM	77.33	77.33
	9:10 AM	77.33	77.33
AVG/DAILY	75.23	69.89	75.23

Report Module Screen with Printed Report



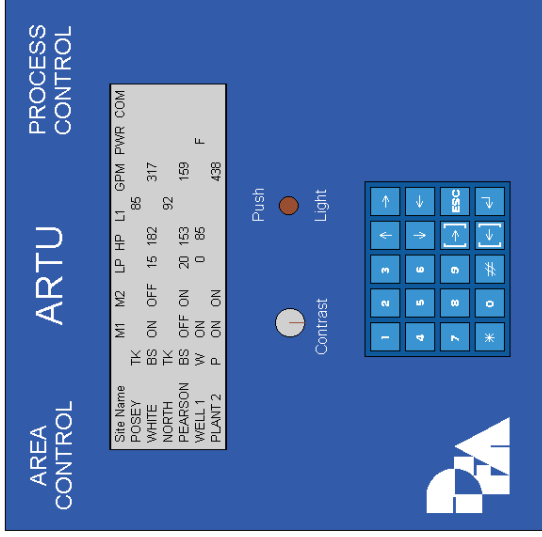
Station Configuration, Polling Statistics &
 Communications Driver Screens



HMI - Site Monitor & Control Screens

AREA CONTROL RTU (A-RTU)

(Example is Radio Networked)



Synthesized Voice Telephone Alarm Dialer Card Addition (Optional)



Area Control RTU (A-RTU)

- Power Supply
- Battery Backup
- Radio, Radio Modem
- Lightning Arrester
- 8 DI, 8 DO, 8 AI, 1 AO, 4 CI
- Telephone Alarm Dialer (Optional)
- Wall Mounted NEMA 4 Cabinet (Shown without Front Cover)

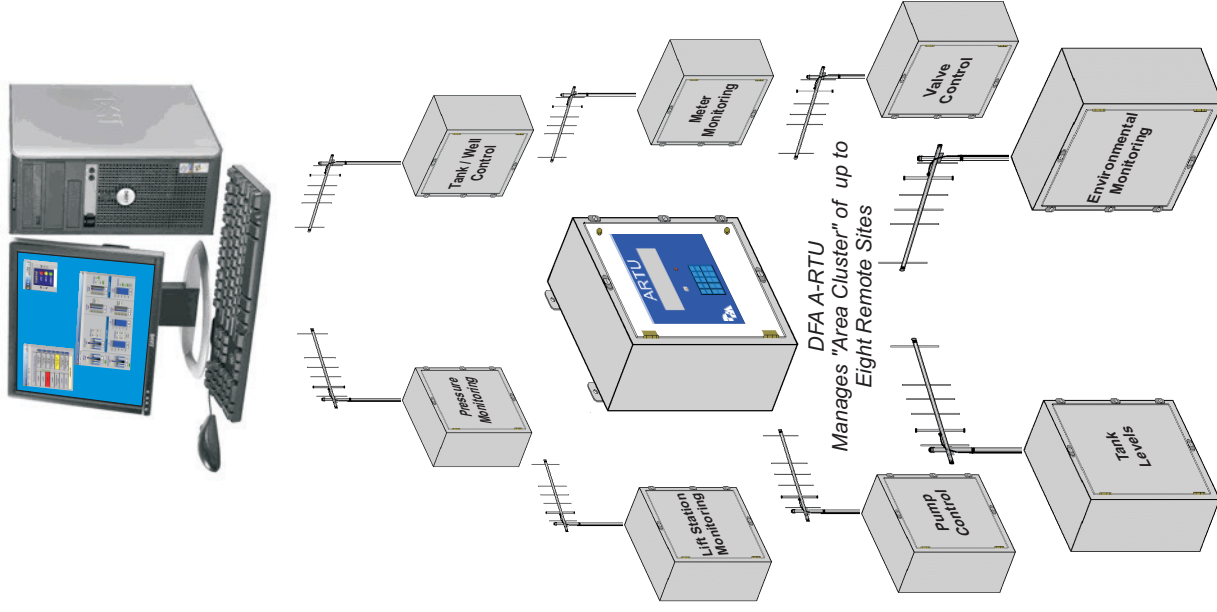
Laptop or PDA Connection for Changes or Monitoring of Telemetry Control System (Optional)



OK	OK	NO FLOW	VALVE 1
UP	POD DN	CONTROL CLOSE	
COND 2200	2370	2250	
DSL/	Site Name	M1	M2
POSEY	TK	ON	OFF
CH/WHITE	BS	ON	OFF
NORTH	TK	ON	OFF
PWR AC	PEARSON	WELL 1	
		PLANT 2	TANK 3 LVL
			26.0 FT
		CONTROLS	BANKS CO WTP / REMOTE TK-3
			ALARMS
			TANK HI [26.5 FT]
			TANK LO [04.5 FT]
			HS PUMP OFF [26.0 FT]
			HS PUMP ON [05.0 FT]

Multiple Site A-RTU Screens Custom Programmed to Project Specifications (Optional)

A-RTU Communicates with the System Control Computer (SCC) or can Manage a Separate DFA Telemetry System (Option).



The DFA Area Control RTU (A-RTU) provides an alternative to PC based Monitor & Control Systems without sacrificing future expandability to a SCC or basic functionality within the Telemetry Monitor & Control System.

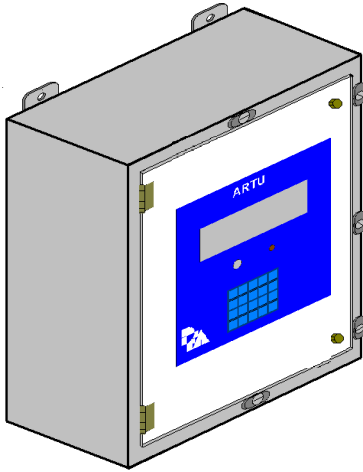
Networked by Radio, Hardwire, Phone, Cellular, Fiber Optic or Internet.

Functions and Features

- High / Low Alarm Indicators
- Pump Alternator
- Level Controller
- Flow Rate and Totalization
- Pump Run Time
- Cycle Counters
- Square Root Extraction
- Differential Pressure Calculation
- Square Root Extraction
- Data Logging
- Multi-Tasking Operating System
- 16 Bit 8 MHz Processor
- 32KB RAM, 32KB ROM
- 2 Separate Watchdogs
- 128 DI / DO Expandability
- 8 X 40 Character LCD Screen
- Operator Keypad Access
- 32 Bit Signed Math Capability
- AND, NAND, OR, NOR
- XOR, XNOR, INVERT

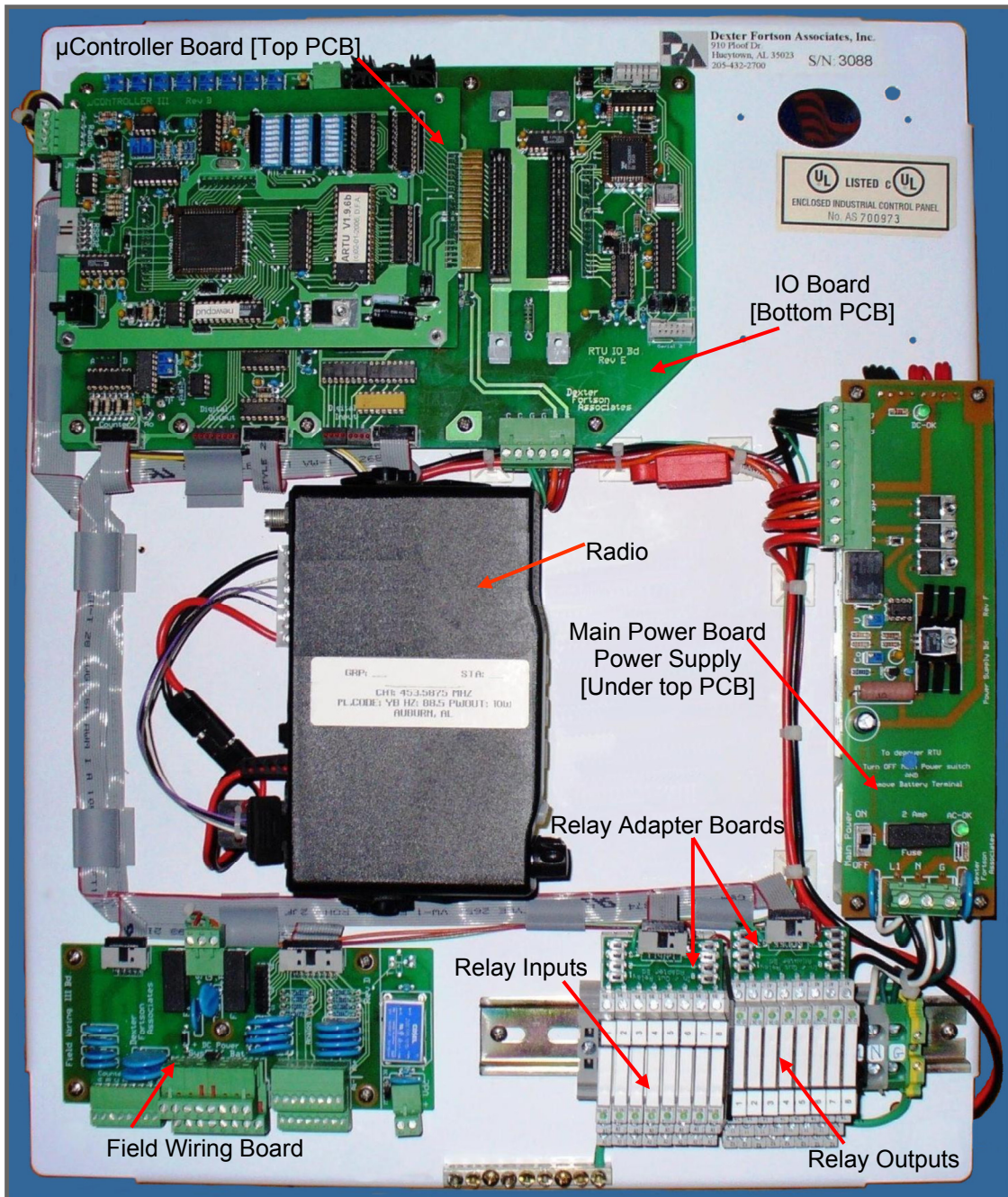
Inputs and Outputs

- Digital Inputs, Relay Isolated to 1500V with Debounce.
- Digital Outputs, Relay Dry Contact, Rated at 5A @ 240V AC/DC.
- Counter Inputs to 2.5kHz, Relay Isolated to 1500V with Debounce.
- Analog Inputs 4-20 mA or 1-5 VDC, Sinking with Zero and Span Adjustments.
- Analog Output 4-20 mA, Sourcing or Sinking with Zero and Span Adjustments.



Standard ARTU

Utility Grade Unit



Remote Terminal Units. These units, communicate with the System Control Computer, 'collect, store and forward' information, and/or 'monitor and control' remote devices.

Inputs may be Digital, Counter(16 or 32 bit), Analog, or Position Encoder.

Input signal requirements are:

- Digital or Counter..Dry Contact / 120v AC-DC / 24v AC / 12v DC
- Analog.....4 - 20mA sinking / 0 - 5vdc
- Encoder.....2 channel quadrature with Index and Home

Outputs may be Digital or Analog.

Output signals provide:

- Digital.....Dry Contact (1A @ 120v AC-DC)
- Analog.....4 - 20 mA (Sourcing or Sinking) or 0 - 5v dc

Many types of RTU's are available: *Expandable [E-RTU], Midi[D-RTU], Mini[M-RTU], Area[A-RTU], PLC and Custom.*

Expandable RTU [E-RTU] utilizes a card cage design allowing any combination of Input / Output cards required by the customer's installation.

Group 1 E-RTU's have 5 I/O slots available. Group 2 E-RTU's have 12 I/O slots available. Program Space 32k SRAM / 32k EPROM / RTC

Midi-RTU [D-RTU] has a fixed I/O set.

- 8 Digital Inputs (120vAC / 24vAC / 12vDC through a Relay Input PCB)
- 4 Counter Input (Dry Contact to DC Power)
- 8 Analog Inputs (4-20mA sinking, may be jumpered as Digital Inputs)
- 8 Relay Drives (through a Relay Output PCB)
- 1 Analog Output (4-20mA / 0-5v)

Program Space 32k SRAM / 32k EPROM / RTC

Mini-RTU [M-RTU] is physically smaller and has a fixed I/O set.

- 4 Digital Inputs (120vAC / 24vAC / 12vDC through a Relay I/O PCB)
- 2 Counter Input (Dry Contact to DC Power)
- 4 Analog Inputs (4-20mA sinking, may be adapted as Digital Inputs)
- 4 Digital Outputs (Dry Contact through a Relay I/O PCB)
- 1 Analog Output (0-5v)

Program Space 2k SRAM / 8k OTP-ROM

Area-RTU [A-RTU] is a stand-alone, programmable cluster controller for up to 8 x-RTUs. The A-RTU uses a card cage design, allowing any of the E-RTU boards to be used. An LCD Display and Keypad are used for data monitoring and control loop programming.

Programmable Logic Controller-RTU [PLC-RTU] are protocol converters, translating PLC information to DFA data packets for SCC use. Check with the DFA manufacturing center for current protocols supported.

Custom-RTU - Consult the DFA manufacturing center for detailed information.

All RTU's may be AC or DC powered. The Mini-RTU may be Solar powered.

If a group of RTUs is too far away for the System Control Computer to converse with directly, then a Repeater Unit is used.

Combinations of Radio, Cellular or Wired Telephone, and Carrier Current interconnections are possible to meet the customer's specific needs.

SYSTEM EXAMPLES

Mini-RTU(solar power only)

Tank Level Remote Valve

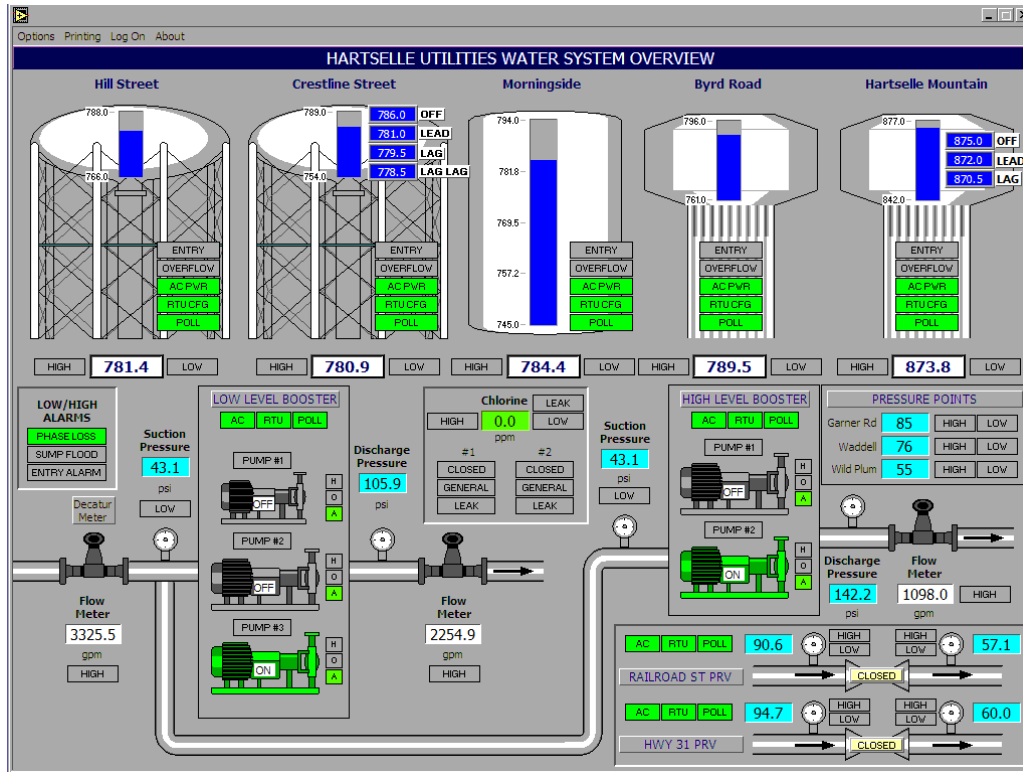
Midi-RTU

Lift Station Multi Pump Station Process Control
Irrigation Control

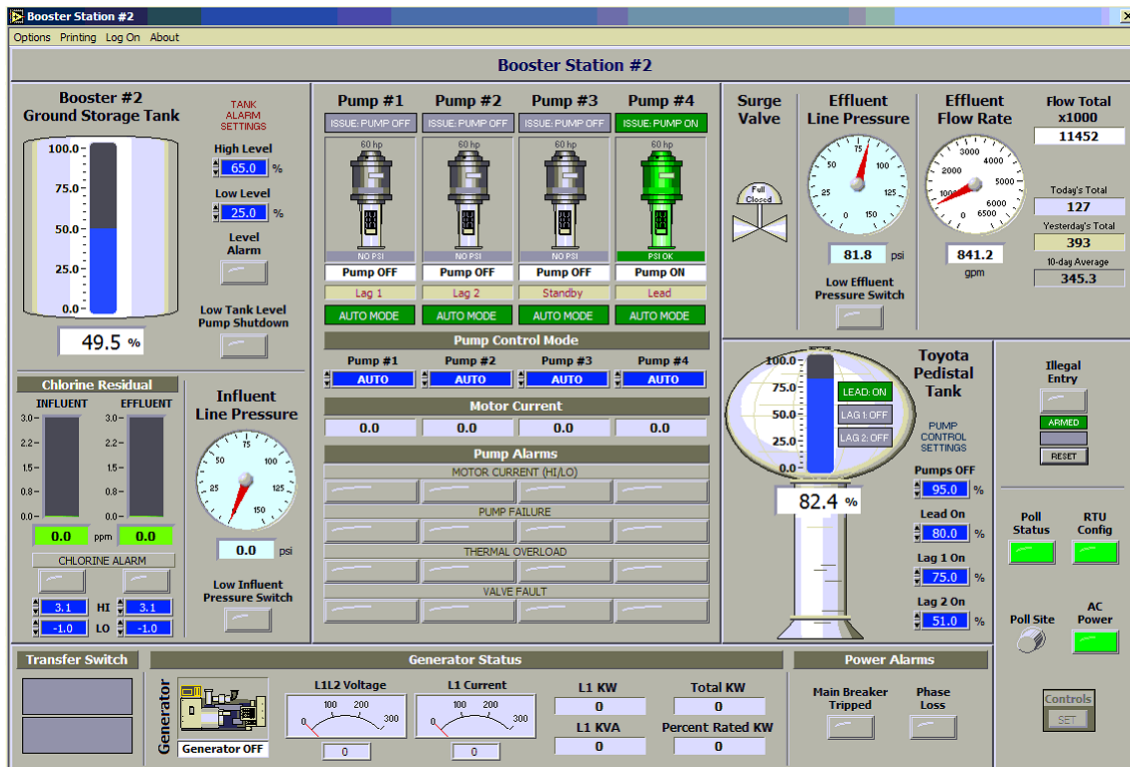
Expandable-RTU

Process Control Multi Pump Station Irrigation Control
Lift Station Voice Dialer Custom Applications

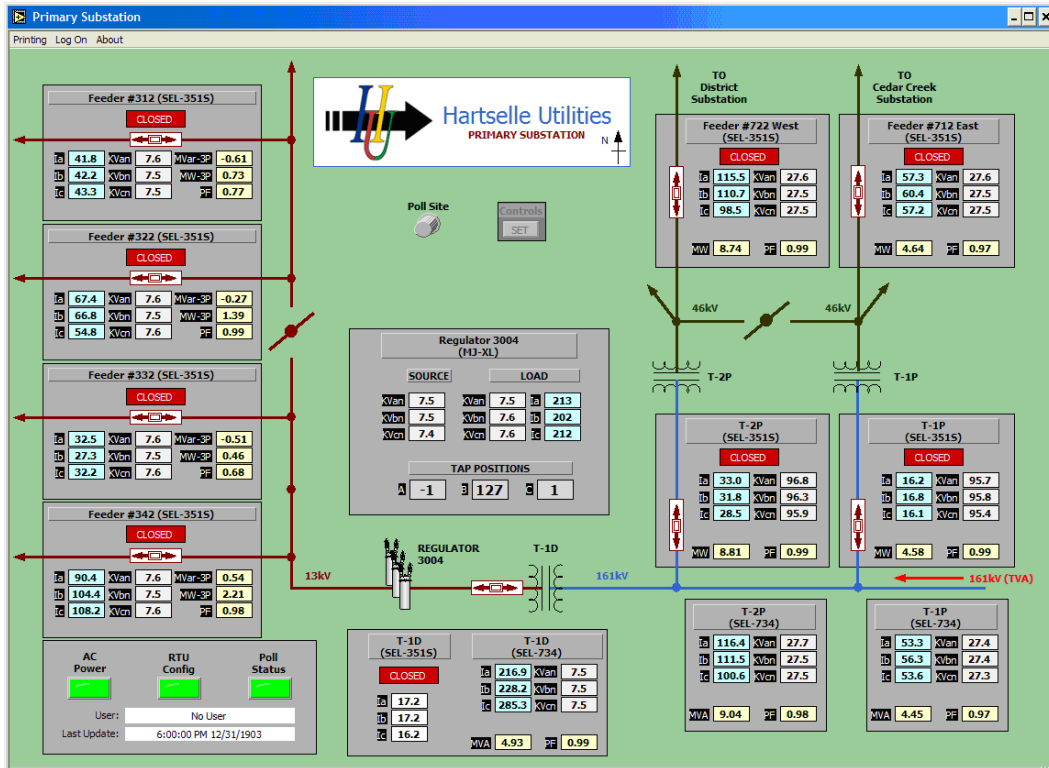
Water System Overview Screen:



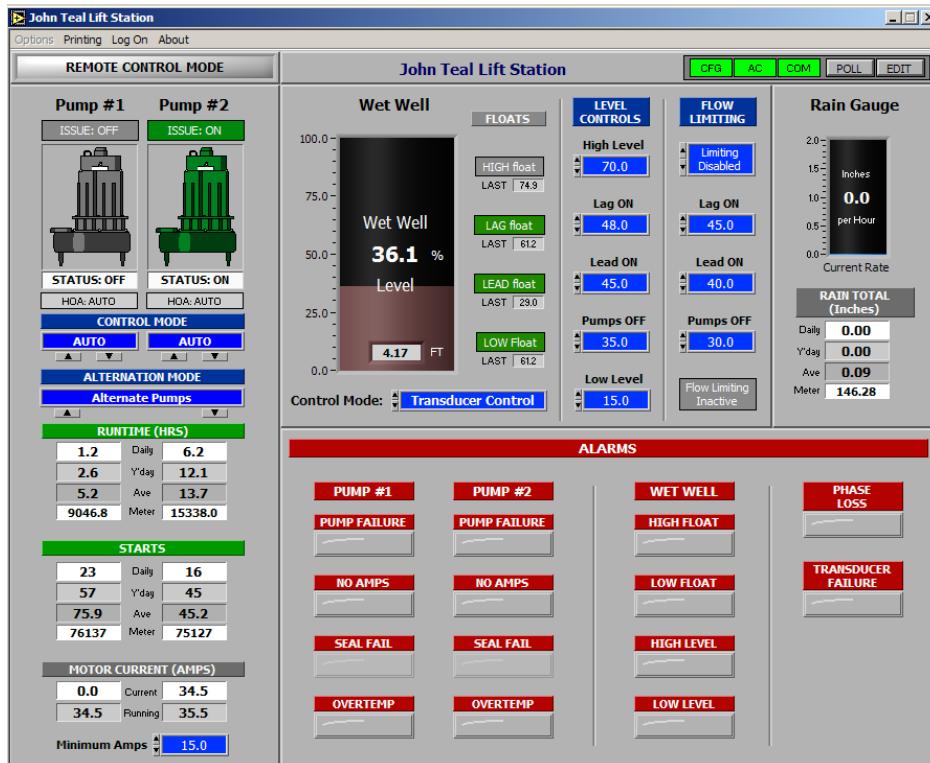
Booster Station:



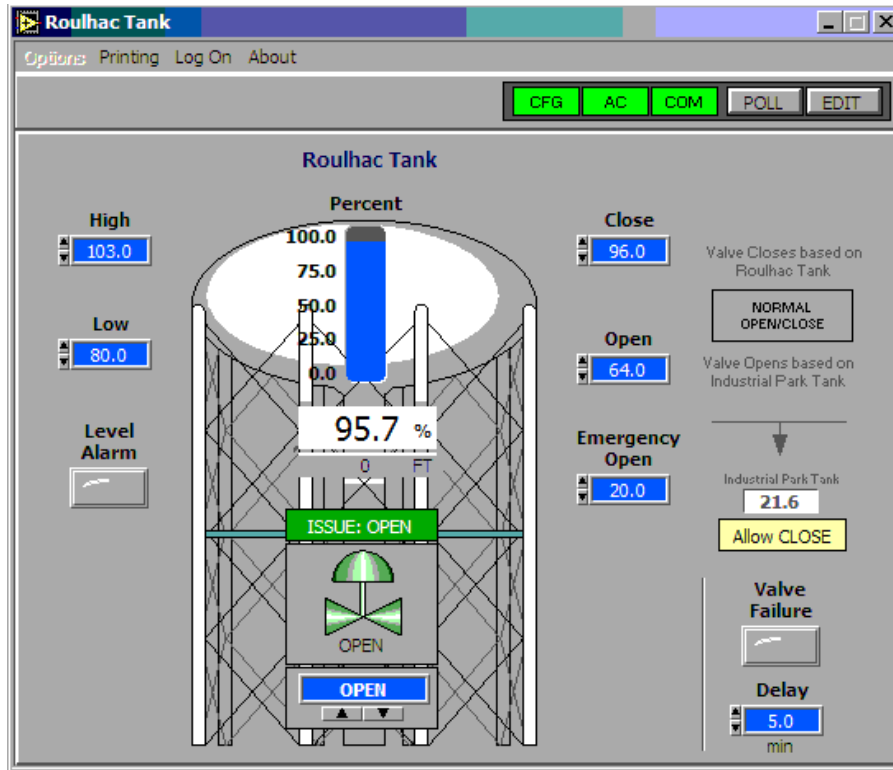
Electrical Substation:



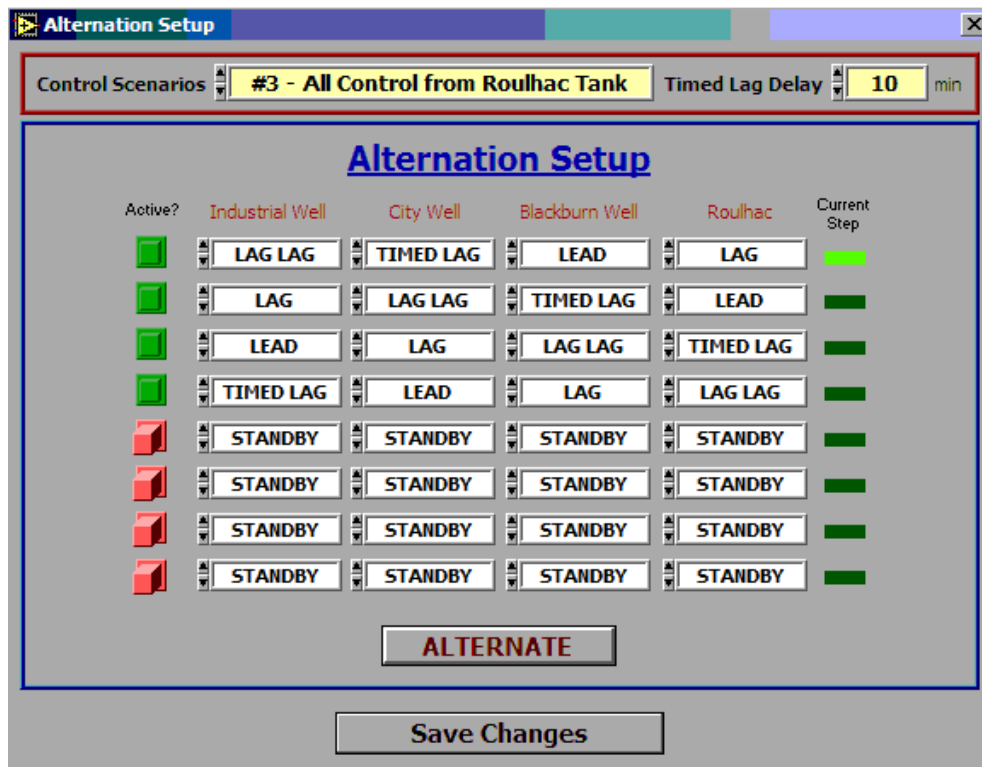
Lift Station Control:



Tank Site with Valve Control:

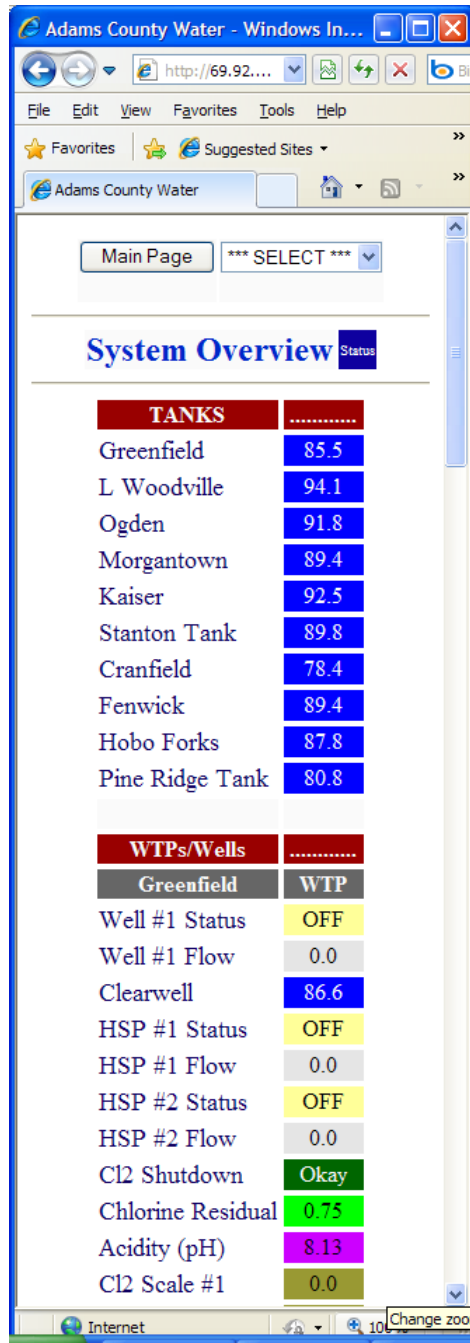


Custom Pump Alternation Setup:



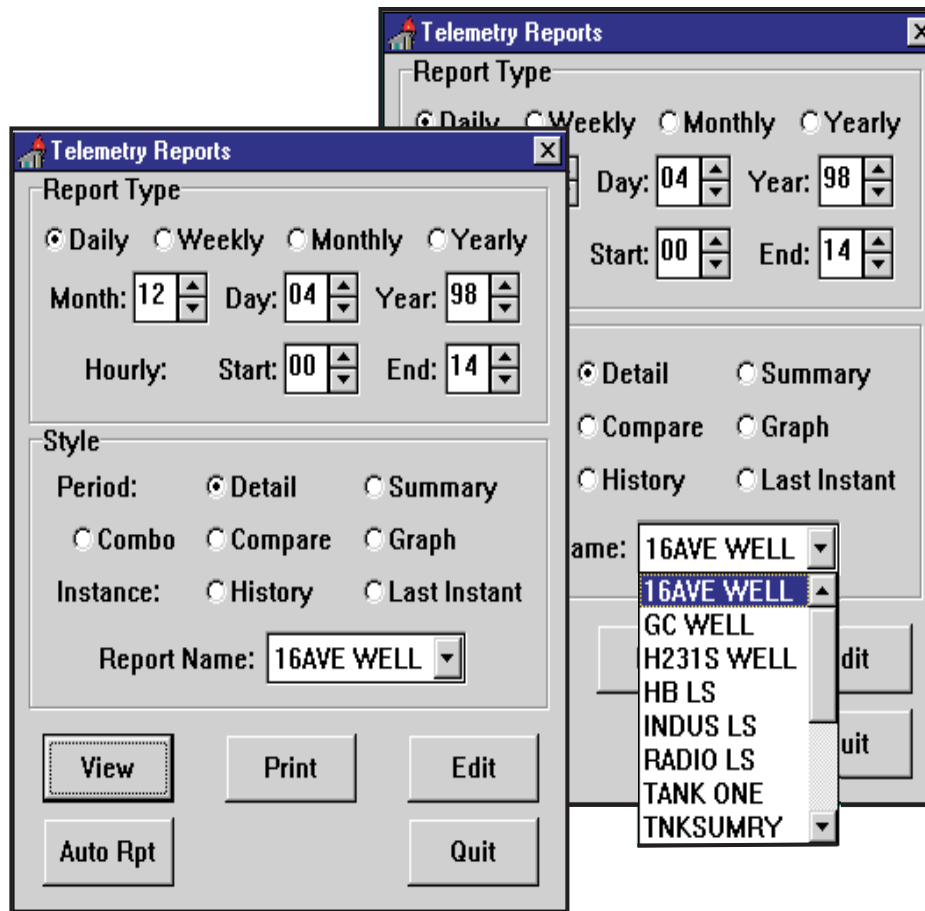
DFA Web Interface Software

(Web Browser access to SCADA / Telemetry System)



DEXTER FORTSON ASSOCIATES, INC.

TELEMETRY / SCADA REPORT SOFTWARE



The DFA SCADA Report Software has the capability to be a powerful tool in managing the telemetry data by presentation of data in a simple and printable report format. The check boxes and pull down menus make choosing a report easy for all users. Users have the option to print out the included standard reports or can create their own reports to print. All Telemetry System data is automatically summarized each night for historical reports.

There are four **Report Types** that an operator can select: daily, weekly, monthly, and yearly. Each report type that is selected displays data from a different viewpoint or style.

Each **Report Style**, Period or Instantaneous, is used differently according to the Report Type selected.

Period Reports are intended to show totals and averages for a specific time frame and include Detail, Summary, Combo, Compare, and Graph.

Instance Reports are intended to show the actual values at an instant in time and include History and Last Instance.

All data may be exported into a Microsoft Excel spreadsheet from the DFA SCADA Report Software.

Detail Period Report

Operator Report:

Pressures

3:22 PM

10/20/1998

Daily

12AM-12 PM

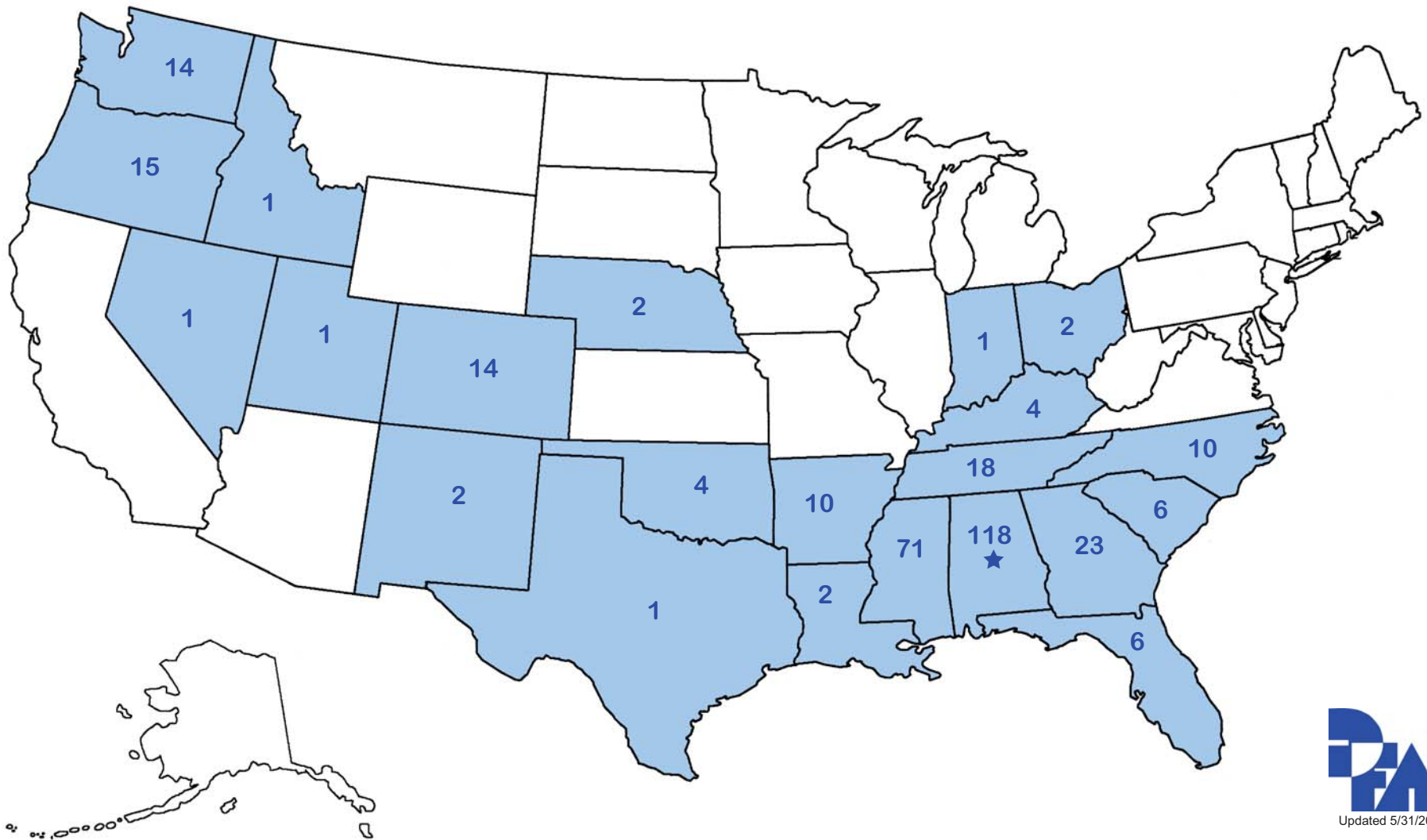
10/20/1998

SITE:	BufordHwy	BufordHwy	MedicalCtr	MedicalCtr	NewHopeRd	NewHopeRd	Nat/Guard	Papermill	ScenicHwy	Indust_Dr	Regal_Dr	GraysonHwy
DESC:	Inlet	Outlet	Inlet	Outlet	Inlet	Outlet	Pressure	Pressure	Pressure	Pressure	Pressure	Pressure
UNIT:	Avg PSI	Avg PSI	Avg PSI	Avg PSI	Avg PSI	Avg PSI	Avg PSI	Avg PSI	Avg PSI	Avg PSI	Avg PSI	Avg PSI
TIME:												
12-1 AM	77.93	67.97	93.80	78.40	75.17	76.17	76.50	130.40	76.50	119.60	90.20	74.50
1-2 AM	77.10	68.93	92.20	78.40	75.50	77.50	79.40	132.40	81.40	123.50	92.20	75.50
2-3 AM	78.10	69.93	93.10	77.50	76.50	75.50	79.40	132.40	81.40	121.60	92.20	75.50
3-4 AM	78.40	68.60	93.10	78.40	76.50	75.50	78.40	133.30	81.40	121.60	91.20	74.50
4-5 AM	81.75	69.60	97.10	79.40	86.30	79.73	81.07	135.30	81.40	124.83	95.10	78.40
5-6 AM	70.58	65.36	86.27	73.17	71.18	69.80	71.80	124.00	70.93	114.40	85.93	66.30
6-7 AM	62.75	57.87	76.50	67.60	54.90	58.13	59.80	114.03	64.03	107.80	76.50	56.90
7-8 AM	64.70	59.80	77.50	68.60	60.77	60.77	66.63	116.70	70.60	107.80	77.50	57.80
8-9 AM	65.37	60.47	81.73	71.90	63.70	64.70	66.70	123.83	72.50	111.80	81.40	63.70
9-10 AM	66.70	61.13	82.40	72.50	65.70	65.70	68.60	121.60	69.60	115.70	83.30	64.70
10-11 AM	67.04	61.56	84.63	74.50	67.60	68.60	67.60	121.60	69.60	117.60	87.57	67.60
11-12 AM	68.38	63.70	81.40	71.60	67.60	67.60	72.50	126.50	71.60	113.70	85.30	68.60
1-2 PM	68.35	63.45	83.30	72.50	67.60	69.60	70.60	126.50	77.50	113.70	83.00	69.60
2-3 PM	67.33	63.03	83.30	72.50	65.70	67.60	71.60	124.50	74.50	115.70	84.30	67.60
3-4 PM	69.60	65.70	84.97	74.50	66.26	69.13	70.60	122.50	76.50	115.70	84.30	65.70
4-5 PM	66.70	61.80	82.40	72.50	65.70	67.60	69.60	123.50	74.50	117.60	86.30	69.60
5-6 PM	68.04	63.14	82.40	72.50	66.70	66.70	70.60	124.50	74.50	115.70	85.30	67.60
6-7 PM	65.70	60.80	83.30	72.50	63.70	62.70	69.60	123.50	70.93	115.70	84.30	66.70
7-8 PM	65.03	59.55	79.40	69.60	62.70	62.70	65.70	118.60	71.60	111.80	81.40	61.80
8-9 PM	62.70	57.20	75.50	68.60	59.08	60.43	61.43	118.60	67.60	111.80	80.40	61.80
9-10 PM	65.08	60.00	79.10	69.60	59.40	61.92	66.06	120.60	68.38	111.80	83.30	64.70
10-11 PM	66.03	61.13	83.30	73.50	61.80	66.70	66.15	120.08	73.50	113.70	83.30	65.70
11-12 PM	67.00	63.03	83.63	74.50	66.70	71.60	73.87	125.17	76.50	117.60	88.23	66.70
	<u>73.87</u>	<u>68.30</u>	<u>87.30</u>	<u>73.50</u>	<u>72.50</u>	<u>72.53</u>	<u>73.50</u>	<u>131.07</u>	<u>76.50</u>	<u>117.60</u>	<u>87.30</u>	<u>70.23</u>
AVG/TOTAL:	70.01	63.44	84.43	73.02	66.55	67.81	70.23	124.24	72.94	116.2	85.3	67.56

Dexter Fortson Associates, Inc.

Telemetry Systems by State

326 Systems / 5,400 RTUs



DEXTER FORTSON ASSOCIATES, INC.

Customers by Telemetry Application

<u>CUSTOMER</u>	<u>CITY</u>	<u>ST</u>	<u>PHONE</u>	<u>WTR</u>	<u>W WTR</u>	<u>ENV</u>	<u>IND</u>	<u>GAS</u>	<u>ELEC</u>	<u>IRRG</u>
Addison Town of	Addison	AL	256-747-2971	√						
Alabama Gas Corporation	Coosada	AL	334-285-5158					√		
Alabama Power Company - Gorgas Plt	Parrish	AL	205-257-1157				√			
Alabaster Water Board	Alabaster	AL	205-663-6155	√						
Americold Compressor Company	Cullman	AL	256-734-9160				√			
Attalla City of	Attalla	AL	256-538-3322	√						
Auburn Water Works Board	Auburn	AL	334-887-4911		√					
Autauga County of	Prattville	AL	334-365-2804	√				√		
Berry Town of	Berry	AL	205-689-4562	√						
Big Wills Valley Water Association	Attalla	AL	256-538-7950	√						
Birmingham Water Brd Industrial Div	Birmingham	AL	205-254-0500	√						
Billingsley Water Authority	Billingsley	AL	334-365-5919	√						
Black Warrior Methane	Bookwood	AL	205-481-6150					√		
Blount County Water Authority	Cleveland	AL	205-914-7615	√						
CDX Gas LLC	Tuscaloosa	AL	205-759-3939					√		
Central Elmore Water Authority	Elmore	AL	334-567-6814	√						
Central Talladega County Water Dist	Talladega	AL	256-362-3953	√						
Chandler Mtn Greasy Cove Water Auth	Steele	AL	256-538-6736	√						
Chelsea City of	Chelsea	AL	205-678-8455	√						
Cherokee County Water Authority	Centre	AL	256-927-8348	√						
Childersburg Water Sewer & Gas Brd	Childersburg	AL	256-378-6064	√						
Chrysler Corporation	Huntsville	AL	256-464-2132		√	√				
Citizens Water Service Inc	Brookwood	AL	205-556-2224	√						
Cooks Springs Water Authority	Cook Springs	AL	205-338-4220	√						
COVOL Engineered Fuels	Brookwood	AL	205-657-0661						√	
Cullman County Water Authority	Cullman	AL	256-734-2900	√						
Cullman City of	Cullman	AL	256-739-1212	√						
Curry Water Authority	Jasper	AL	205-221-4164	√						
Daleville City of	Daleville	AL	334-598-2345	√						
Daphne Utilities Board	Daphne	AL	334-621-3198	√	√					
DeKalb-Jackson Water Supply District	Ider	AL	256-632-2254							
De Soto State Park	Fort Payne	AL	256-845-0051		√					
Drummond Company Inc	Jasper	AL	205-917-3006	√	√				√	
Double Springs Town of	Double Springs	AL	205-489-5447	√	√					

Telemetry Application: Water - WTR; Wastewater - W WTR; Environmental - ENV; Industrial - IND; Gas - GAS; Electrical - ELEC; Irrigation - IRRG;

DEXTER FORTSON ASSOCIATES, INC.

Customers by Telemetry Application

<u>CUSTOMER</u>	<u>CITY</u>	<u>ST</u>	<u>PHONE</u>	<u>WTR</u>	<u>W WTR</u>	<u>ENV</u>	<u>IND</u>	<u>GAS</u>	<u>ELEC</u>	<u>IRRG</u>
East Cullman Water System Inc	Fairview	AL	256-796-5828	√						
East Lauderdale County Water Auth	Elgin	AL	256-247-1606	√						
East Montgomery Water & Sewer	Pike Road	AL	334-284-3030	√	√					
Eclectic Town of	Eclectic	AL	334-541-2840	√						
El Paso Prod GOM - Blue Creek West	Tuscaloosa	AL	205-345-2055	√		√		√		
El Paso Prod GOM - White Oak Creek	Birmingham	AL	205-325-3544			√		√		
Eldridge Water Board	Eldridge	AL	205-924-4383	√						
Elkton Water Authority	Elkton	AL	410-392-0711	√						
Elmore County Water Authority	Elmore	AL	334-285-6109	√						
Energen Resources Corporation	Birmingham	AL	205-554-3100			√		√		
Florence City of	Florence	AL	256-760-6637	√						
Fort Payne Water Wks Board	Fort Payne	AL	256-845-3140	√						
Franklin County Water Board	Russellville	AL	256-332-1496	√						
Garden City Water Department	Garden City	AL	256-352-5408	√						
GeoMet Operating Company	Birmingham	AL	205-425-3855					√		
Grand Bay Water Works Board	Grand Bay	AL	334-865-6450	√						
Green Mountain Management	Jasper	AL	205-275-6794						√	
Hartselle Utility Board	Hartselle	AL	256-773-3366	√	√			√		
Harvest-Monrovia Water Authority	Harvest	AL	256-837-1132	√						
Heflin Water & Sewer Board	Heflin	AL	256-463-2011	√						
Jasper Water & Sewer Board	Jasper	AL	205-221-2141	√	√					
Jim Walters Resources Inc	Brookwood	AL	205-554-6450						√	
Krispy Kreme Doughnut	Birmingham	AL	205-836-3251				√			
Leeds Water Works Board	Leeds	AL	205-699-5151	√						
Lincoln City of	Lincoln	AL	205-763-8486		√					
Linden City of	Linden	AL	334-295-8011	√						
Loachapoka Water Board	Loachapoka	AL	334-887-3329	√						
Lynn Water Works	Lynn	AL	205-893-5250	√						
Macon County Water Board	Tuskegee	AL	334-727-2381	√						
Margret Town of	Margret	AL	205-629-7001	√						
Marion County Public Water Authority	Guin	AL	205-468-2555	√						
Montgomery WW & Sewer Board	Montgomery	AL	334-396-1110	√	√					
Mosses Water Sewer & FP Authority	Hayneville	AL	334-563-9293	√						
Mulga Town of	Mulga	AL	205-781-0645	√						

Telemetry Application: Water - WTR; Wastewater - W WTR; Environmental - ENV; Industrial - IND; Gas - GAS; Electrical - ELEC; Irrigation - IRRG;

DEXTER FORTSON ASSOCIATES, INC.

Customers by Telemetry Application

<u>CUSTOMER</u>	<u>CITY</u>	<u>ST</u>	<u>PHONE</u>	<u>WTR</u>	<u>W WTR</u>	<u>ENV</u>	<u>IND</u>	<u>GAS</u>	<u>ELEC</u>	<u>IRRG</u>
Nauvoo Water System	Nauvoo	AL	205-221-3015	√						
North Jackson Water Authority	Ider	AL	256-632-2254	√						
Northeast Alabama Water	Ft Payne	AL	256-845-6186	√						
Northwest St Clair Water System	Steele	AL	205-594-7196	√						
Oakman Water Works Board	Oakman	AL	205-622-3230	√						
Odenville Utilities Board	Odenville	AL	205-629-5801	√						
Oneonta Utilities Board	Oneonta	AL	205-274-2159	√						
Owassa-Brownsville Water Authority	Evergreen	AL	334-578-2443	√						
Owens Cross Roads Water Authority	Owens Cross Rds	AL	256-725-4203	√						
Parrish Water Works	Parrish	AL	205-686-5085	√						
Pelham City of	Pelham	AL	205-663-3901	√	√					
Pell City Public Works	Pell City	AL	205-338-3886	√						
Phil Campbell City of	Phil Campbell	AL	205-993-5313	√						
Pickens County Water Authority	Carrollton	AL	205-367-8923	√						
Pinedale Shores Water & Sewer Authority	Ashville	AL	205-594-4640		√					
Pioneer Electric Co-op	Greenville	AL	334-382-6632						√	
Pisgah Town of	Pisgah	AL	256-451-3232	√						
Reece City Town of	Atalla	AL	256-538-6521	√						
Remlap-Pine Mountain Water Authority	Remlap	AL	205-681-1711	√						
Saga Petroleum Service	Birmingham	AL	205-823-2977			√		√		
Sand Mountain Water Authority	Ider	AL	256-632-2254	√	√					
Sand Springs Water Authority	Northport	AL	205-339-9807	√						
Scottsboro Water Sewer & Gas Brd	Scottsboro	AL	256-574-1515	√	√					
Selma City of	Selma	AL	334-872-6205	√						
Shelby County Water Board	Columbiana	AL	205-669-3869	√						
Snead City of	Snead	AL	205-466-3200	√						
Southside Water & Sewer Board	Southside	AL	256-422-8707	√						
Southwest Alabama Water Authority	Peterman	AL	334-564-2727	√						
Spanish Fort Water System	Spanish Fort	AL	334-626-3067	√						
Spring Valley Water Authority	Muscle Shoals	AL	256-383-1666	√						
Star-Mindingall Water Authority	Tuskegee	AL	334-727-5000	√						
St Elmo-Irvington Water Authority	St Elmo	AL	334-957-2885	√						
Steele Water Authority	Steele	AL	256-538-8145	√						
Stewartville Water Board	Sylacauga	AL	256-245-0214	√						

Telemetry Application: Water - WTR; Wastewater - W WTR; Environmental - ENV; Industrial - IND; Gas - GAS; Electrical - ELEC; Irrigation - IRRG;

DEXTER FORTSON ASSOCIATES, INC.

Customers by Telemetry Application

<u>CUSTOMER</u>	<u>CITY</u>	<u>ST</u>	<u>PHONE</u>	<u>WTR</u>	<u>W WTR</u>	<u>ENV</u>	<u>IND</u>	<u>GAS</u>	<u>ELEC</u>	<u>IRRG</u>
Thomaston Town of	Thomaston	AL	334-627-3434	✓						
Thomasville City of	Thomasville	AL	334-636-1159	✓						
Thorsby City of	Thorsby	AL	205-646-3575	✓						
Unimin Corporation	Tuscaloosa	AL	205-758-8353				✓			
Uriah Water System Inc	Uriah	AL	334-621-9355	✓						
VAW Water System Inc	Vinemont	AL	256-734-2413	✓						
Wall Street Water Authority	Tallassee	AL	334-283-5002	✓						
Walnut Hill Water Authority	Dadeville	AL	256-825-9841	✓						
Warrior River Water Board	Bessemer	AL	205-491-7721	✓						
West Autauga Water	Prattville	AL	334-872-2883	✓						
West Clarke County Water System	Coffeeville	AL	334-276-3920	✓						
West Lauderdale Water & FP Authority	Florence	AL	256-766-8787	✓						
West Lawrence County Water	Mt. Hope	AL	256-974-9114	✓						
West Morgan-East Lawrence Water	Decatur	AL	256-355-3746	✓						
Westover Water Board	Westover	AL	205-678-9847	✓						
Wetumpka Water & Wastewater	Wetumpka	AL	334-567-5230	✓	✓					
Benton County Water District #1	Rogers	AR	479-636-0002	✓						
Harrisburg Water System	Harrisburg	AR	870-578-5461	✓						
Helena Municipal Water & Sewer	Helena	AR	870-338-7438	✓	✓					
Jacksonville City of Wastewater Dept	Jacksonville	AR	501-982-7594		✓					
Mayflower City of	Mayflower	AR	501-470-1818	✓						
Mountain Home City of	Mtn Home	AR	870-425-5115	✓						
North Pike Rural Water Association	North Pike	AR	870-342-5268	✓						
Southwest Arkansas Water System	Benton	AR	870-896-2701	✓						
Stephens Water Department	Stephens	AR	870-786-5393	✓						
Toadsuck Town of	Perryville	AR	501-889-5126	✓						
Ayars Farm	Center	CO	719-754-3351							✓
Bowsher Farms	Monte Vista	CO	719-852-2957							✓
Dick Frasier Farms	Center	CO	719-754-3948							✓
Felmler Farms	Center	CO	719-754-2355							✓
Grimmway Farms	Monte Vista	CO	719-852-0664							✓
Lynn McCullough Farms	Monte Vista	CO	719-852-4737							✓
Mike Mitchell Farms LLC	Monte Vista	CO	719-852-3060							✓
Sans Luis Valley Research Center	Center	CO	719-754-3594							✓

Telemetry Application: Water - WTR; Wastewater - W WTR; Environmental - ENV; Industrial - IND; Gas - GAS; Electrical - ELEC; Irrigation - IRRG;

DEXTER FORTSON ASSOCIATES, INC.

Customers by Telemetry Application

<u>CUSTOMER</u>	<u>CITY</u>	<u>ST</u>	<u>PHONE</u>	<u>WTR</u>	<u>W WTR</u>	<u>ENV</u>	<u>IND</u>	<u>GAS</u>	<u>ELEC</u>	<u>IRRG</u>
Southern Colorado Farms	Center	CO	719-754-2940							√
Steffens Ranch	Monte Vista	CO	719-852-4640							√
Sumit Farms LLC	Center	CO	719-754-3613							√
Three-S Ranch	Blanca	CO	719-379-3697							√
Valley Fresh Farms	Center	CO	719-754-2708							√
Zapata Seed Company	Hooper	CO	719-754-9048							√
Chipley City of	Chipley	FL	850-638-6350	√						
DeFuniak Springs City of	DeFuniak Springs	FL	904-892-8534	√	√					
Lake Panasoffkee Water Association	Lake Panasoffkee	FL	904-793-4236	√						
Mossy Head Water Works	Mossy Head	FL	850-892-3538	√						
Regional Utilities	Santa Rosa	FL	850-231-5114	√						
Tallahassee City of	Tallahassee	FL	904-891-5538				√			
Big Canoe / UWS	Big Canoe	GA	706-268-3400	√						
Calhoun City of	Calhoun	GA	706-629-4701	√						
Canton City of	Canton	GA	770-479-2392	√						
Cave Spring City of	Cave Spring	GA	706-777-3382	√						
Chattooga Water District #1	Trion	GA	706-734-2827	√						
Cherokee County Water & Sewer Auth	Canton	GA	770-591-7156	√	√					
Douglas City of Water Department	Douglas	GA	912-389-3444	√						
Ellijay-Gilmer County Water Authority	Ellijay	GA	706-276-2202	√						
Floyd County Water	Rome	GA	706-291-5172	√						
Fulton County / OMI	Roswell	GA	770-992-1699		√					
Garden City City of	Garden City	GA	912-966-7777	√	√					
Hagan City of	Hagan	GA	912-739-3801		√					
Hahira City of	Hahira	GA	229-794-2330	√						
Hampton City of	Hampton	GA	770-946-3234	√						
Lyerly Water Board	Lyerly	GA	706-895-2611	√						
Meigs City of	Meigs	GA	229-683-3124	√						
Moultrie City of	Moultrie	GA	912-873-3105	√						
Paulding County Brd of Commissioners	Dallas	GA	770-222-6868	√	√					
Pooler City of	Pooler	GA	912-748-4800	√						
Sylvester City of	Sylvester	GA	912-776-8508	√						
Talbot County Brd of Commissioners	Talbotton	GA	706-665-3220	√						
Walnut Mountain Properties	Ellijay	GA	706-635-2530	√						

Telemetry Application: Water - WTR; Wastewater - W WTR; Environmental - ENV; Industrial - IND; Gas - GAS; Electrical - ELEC; Irrigation - IRRG;

DEXTER FORTSON ASSOCIATES, INC.

Customers by Telemetry Application

<u>CUSTOMER</u>	<u>CITY</u>	<u>ST</u>	<u>PHONE</u>	<u>WTR</u>	<u>W WTR</u>	<u>ENV</u>	<u>IND</u>	<u>GAS</u>	<u>ELEC</u>	<u>IRRG</u>
Waycross Water & Sewer Department	Waycross	GA	912-287-2995	√	√					
Cascade Earth Sciences	Boise	ID	208-388-1030				√			
Boonville City of / PSG	Booneville	IN	618-259-6545	√						
Barbourville Utility Commission	Barbourville	KY	606-546-3187	√						
Pineville Utility Commission	Pineville	KY	606-337-6611	√						
Todd County Water District	Elkton	KY	502-277-9048	√						
Water Services Corp of Kentucky	Middlesboro	KY	606-248-2306	√						
Benton Town of	Benton	LA	318-965-2781	√						
Natchitoches City of	Natchitoches	LA	318-352-2216	√						
Adams County Water Association	Natchez	MS	601-446-6616	√						
Amory Utilities	Amory	MS	662-256-5633	√						
Arnold Line Water Association	Hattiesburg	MS	601-264-7111	√						
Bear Creek Water Association	Madison	MS	601-856-5969	√						
Black Bayou Water Association	Leland	MS	662-686-7150	√						
Bond Water Association	Louisville	MS	662-773-3875	√						
Caledonia Town of	Caledonia	MS	662-356-6993	√						
Calvary Rural Water Association Inc	Louisville	MS	662-773-7193	√						
Clarkdale Water Association	Meridian	MS	601-693-4686	√						
Cleveland City of / Severn Trent	Cleveland	MS	662-843-0601	√	√					
Columbus Light & Water Department	Columbus	MS	662-328-7192	√	√					
Copiah Water Association	Hazelhurst	MS	601-892-3738	√						
Culkin Water Association Inc	Vicksburg	MS	601-836-9124	√						
East Leflore Water & Sewer District	Greenwood	MS	662-453-8860	√						
East Lowndes Water Association	Columbus	MS	662-327-1651	√						
Eupora City of	Eupora	MS	662-258-2291	√						
Fisher Ferry Water District	Vicksburg	MS	601-636-1098	√						
French Camp Water Association Inc	French Camp	MS	662-674-5353	√						
Fulton City of	Fulton	MS	662-862-9004	√						
Gaines Trace Water District	Amory	MS	662-257-2288	√						
Gattman Village of	Gattman	MS	662-257-1003	√						
Glade Water Works Association	Laurel	MS	601-428-0586	√						
Gloster City of	Gloster	MS	601-225-4216	√						
Golden Triangle Industrial Park	Columbus	MS	662-328-8369		√					
Golden Triangle Water Association	West Point	MS	662-494-9000	√						

Telemetry Application: Water - WTR; Wastewater - W WTR; Environmental - ENV; Industrial - IND; Gas - GAS; Electrical - ELEC; Irrigation - IRRG;

DEXTER FORTSON ASSOCIATES, INC.

Customers by Telemetry Application

<u>CUSTOMER</u>	<u>CITY</u>	<u>ST</u>	<u>PHONE</u>	<u>WTR</u>	<u>W WTR</u>	<u>ENV</u>	<u>IND</u>	<u>GAS</u>	<u>ELEC</u>	<u>IRRG</u>
Hamilton Water District	Hamilton	MS	662-343-8387	√						
Hatley Water District Inc	Amory	MS	662-256-7245	√	√					
Hilldale Water District	Vicksburg	MS	601-636-8475	√						
Houlka-Houston Water Association	Houlka	MS	662-568-7777	√						
Houston-Palestine Water Association	Baldwyn	MS	662-365-8413	√						
Hub Water Association	Columbia	MS	601-736-0019	√						
Jackson City of / Severn Trent	Jackson	MS	601-372-3439		√					
JP Utility District	Ellisville	MS	601-477-3215	√						
Kipling Water Association	DeKalb	MS	601-743-5800	√						
Lamar Park Water & Sewer Assn	Hattiesburg	MS	601-264-5933	√						
Liberty Town of	Liberty	MS	601-657-8071	√						
Liberty Plattsburg Water Association	Noxapater	MS	662-773-3282	√						
Long Beach City of	Long Beach	MS	228-863-0440	√						
Louisville Utilities	Louisville	MS	662-773-3497	√					√	
Lowndes County Industrial Dev Authority	Columbus	MS	662-328-8369	√						
Lowndes County Water Association	Columbus	MS	662-245-1150	√						
Magee City of	Magee	MS	601-382-2132	√						
Magee's Creek Water Association	Tylertown	MS	601-876-4838	√						
Mendenhall City of	Mendenhall	MS	601-847-1212	√						
Mooreville-Richland Water Association	Mooreville	MS	662-844-0311	√						
New Hope Water Association	Mt. Olive	MS	601-849-9511	√						
North Lauderdale Water Association	Meridan	MS	601-681-6157	√						
Panhandle Water Association	Weir	MS	662-547-9435	√						
Pearl River Central Water Association	Carriere	MS	601-798-3103	√						
Pearl River Valley Water Supply District	Ridgeland	MS	601-856-6574	√	√		√			
Philadelphia Utilities	Philadelphia	MS	601-656-1121	√						
Quincy Water Association	Amory	MS	662-256-7972	√						
Rocky Creek Utilities Inc	Lucedale	MS	601-947-4302	√						
Sam's Town Casino	Robinsonville	MS	662-636-0711		√					
Savannah Water Association	Mantee	MS	662-258-2712	√						
Sessums Water Association	Starkville	MS	662-323-8634	√						
Siloam Water District Inc	West Point	MS	662-494-1852	√						
Southwest Jones Water Association	Moselle	MS	601-752-5385	√						
South Lowndes Water Association	Artesia	MS	662-329-3929	√						

Telemetry Application: Water - WTR; Wastewater - W WTR; Environmental - ENV; Industrial - IND; Gas - GAS; Electrical - ELEC; Irrigation - IRRG;

DEXTER FORTSON ASSOCIATES, INC.

Customers by Telemetry Application

<u>CUSTOMER</u>	<u>CITY</u>	<u>ST</u>	<u>PHONE</u>	<u>WTR</u>	<u>W WTR</u>	<u>ENV</u>	<u>IND</u>	<u>GAS</u>	<u>ELEC</u>	<u>IRRG</u>
Southwest Leake Water Association	Lena	MS	601-260-4330	✓						
Southwest Covington Utility	Seminary	MS	604-722-4447	✓						
Sparta Water Association	Houston	MS	662-456-2910	✓						
Sun Creek Water Association	West Point	MS	662-494-7012	✓						
Sunnyhill Water Association	McComb	MS	601-250-1595	✓						
The PUL Alliance	Pontotoc	MS	662-489-2415	✓						
Toomsba Water System	Meridian	MS	601-632-4366	✓						
Tupelo Water & Light Department	Tupelo	MS	662-841-6460	✓						
VA Medical Center	Jackson	MS	601-362-4471	✓						
Wayside Water Authority	Wayside	MS	662-686-7150	✓						
West Lamar Water Association	Hattiesburg	MS	601-264-6305	✓						
Woodland Water Works Association	Woodland	MS	662-456-2910	✓						
Chatham County Utilities	Pittsboro	NC	919-542-8238	✓						
Durham County WWTP	Durham	NC	919-544-8280		✓					
Elm City Town of	Elm City	NC	252-236-4917		✓					
Energy United Water Corporation	Stony Point	NC	704-585-6518	✓						
Franklin County Water & Sewer Auth	Franklinton	NC	919-494-5415	✓						
Franklinton Town of	Franklinton	NC	919-494-2218	✓						
LaGrange Town of	LaGrange	NC	252-566-3295		✓					
Louisburg Town of	Louisburg	NC	919-496-3433	✓	✓					
Seaboard Town of	Seaboard	NC	252-589-5061	✓						
Topsail Beach Town of	Topsail	NC	910-328-5841	✓						
Diamond Hill Farm	Alliance	NE	308-762-7467							✓
Nebraska Irrigation	Columbus	NE	402-564-1514							✓
El Paso Energy Raton LLC	Raton	NM	713-546-4819					✓		
Farmington / OMI	Farmington	NM	505-326-1918	✓						
White Mountain Ranch	Dyer	NV	702-572-3232							✓
Oak Hill Village of	Oak Hill	OH	740-682-7017	✓						
South Point Utilities Inc	South Point	OH	740-377-2304	✓						
Alva City of	Alva	OK	580-327-0255	✓						
Kingston Town of	Kingston	OK	580-564-2301	✓						
Sulphur Town of	Sulphur	OK	580-622-5096	✓						
Roosevelt Town of	Roosevelt	OK	580-639-2466	✓						
Amstead Farming Company	Hermiston	OR	541-561-4826							✓

Telemetry Application: Water - WTR; Wastewater - W WTR; Environmental - ENV; Industrial - IND; Gas - GAS; Electrical - ELEC; Irrigation - IRRG;

DEXTER FORTSON ASSOCIATES, INC.

Customers by Telemetry Application

<u>CUSTOMER</u>	<u>CITY</u>	<u>ST</u>	<u>PHONE</u>	<u>WTR</u>	<u>W WTR</u>	<u>ENV</u>	<u>IND</u>	<u>GAS</u>	<u>ELEC</u>	<u>IRRG</u>
Coleman Farms aka John F Coleman	Hermiston	OR	541-567-1135							✓
Columbia Improvement District	Boardman	OR	541-481-9454							✓
Fredrickson Farming LLC	Boardman	OR	541-481-2818							✓
G-2 Farming LLC	Hermiston	OR	541-379-4106							✓
Golden Valley Farms Inc	Hermiston	OR	541-561-7750							✓
Hale Companies - Echo Farm	Echo	OR	541-376-5055							✓
Hawman Farms	Hermiston	OR	541-567-3165							✓
Hillsboro Landfill-Waste Management NE	Hillsboro	OR	503-640-9427		✓					
Inland Land Company	Hermiston	OR	541-571-3884							✓
Klamath Irrigation District	Klamath	OR	541-882-6661							✓
Pierce Corporation	Eugene	OR	541-485-3111							✓
Port of Morrow	Boardman	OR	541-481-7678	✓						
Riverview Seed Company	Hermiston	OR	541-561-4807							✓
Windy River II	Hermiston	OR	541-449-8627							✓
Belton-Honea Path Water Authority	Honea Path	SC	864-369-7442	✓						
Blue Ridge Rural Water Company	Greer	SC	864-895-1719	✓						
Florence City of	Florence	SC	843-665-3271	✓						
Honea Path Town of	Honea Path	SC	864-369-7678	✓	✓					
Ninety Six Town of	Ninety Six	SC	864-543-2900	✓	✓					
Wellman Inc	Darlington	SC	843-395-3383				✓			
25 Utility District	Ridgely	TN	615-735-9895	✓						
Bedford County Water Authority	Shelbyville	TN	931-684-1667	✓				✓		
Boise Cascade / WAI	Pasco	TN	509-545-4227	✓		✓				
Bon-De-Croft Utility District	Sparta	TN	931-935-2150	✓						
Clarksville City of	Clarksville	TN	931-645-7496	✓						
Dekalb Utility District	Smithville	TN	615-597-6490	✓						
Estill Springs Town of	Estill Springs	TN	931-649-5971	✓						
Fairview Town of	Fairview	TN	615-799-2484	✓	✓					
Luttrel-Blaine-Corrytown Utility	Luttrel	TN	865-992-8611	✓						
Marion County Water Sewer & Gas	South Pittsburg	TN	423-837-7164	✓						
Mowbray Mountain Utility District	Soddy Daisy	TN	423-332-4581	✓						
Nashville Metro Airport	Nashville	TN	615-255-3161			✓				
Quebeck-Walling Utility District	Sparta	TN	615-836-2147	✓						
South Giles County Water Authority	Prospect	TN	931-468-2875	✓						

Telemetry Application: Water - WTR; Wastewater - W WTR; Environmental - ENV; Industrial - IND; Gas - GAS; Electrical - ELEC; Irrigation - IRRG;

DEXTER FORTSON ASSOCIATES, INC.

Customers by Telemetry Application

<u>CUSTOMER</u>	<u>CITY</u>	<u>ST</u>	<u>PHONE</u>	<u>WTR</u>	<u>W WTR</u>	<u>ENV</u>	<u>IND</u>	<u>GAS</u>	<u>ELEC</u>	<u>IRRG</u>
Spring Hill Town of	Spring Hill	TN	931-486-2252	✓	✓					
St Joseph City of	St. Joseph	TN	931-845-4141	✓						
Wilson County Water Authority	Lebanon	TN	615-449-2951	✓						
Witt Utility District	Morristown	TN	423-581-4895	✓						
Port Neches City of	Port Neches	TX	409-727-2182	✓	✓					
Rocky Ridge Town of	Rocky Ridge	UT	435-623-1707	✓						
Berg Farms LLC	Paterson	WA	509-727-4597							✓
Carma Irrigation	Prosser	WA	509-894-4773							✓
Graham Rd Recycling & Disposal Facility	Medical Lake	WA	509-244-0151		✓					
Greater Wenatchee Landfill	East Wenatchee	WA	509-884-2802		✓					
Hilltop Fibre Farm/Boise Cascade	Pasco	WA	509-544-6537				✓			
J R Simplot Company	Pasco	WA	509-547-6834				✓			
Ochoa Foods Inc	Warden	WA	509-349-2210		✓		✓			
Okanogan Irrigation District	Okanogan	WA	509-826-1250				✓			
Pasco Farming Inc	Pasco	WA	509-545-45445							✓
Sandpiper Farms	Paterson	WA	509-875-2211							✓
Stahl Farms	Ritzville	WA	509-660-0104							✓
St Michelle Vineyards	Woodinville	WA	509-786-5565							✓
Weber Farms	Quincy	WA	509-787-4578							✓
Wyckoff Farms	Paterson	WA	509-875-2367							✓

Total Number of Systems = 329

Total Number of RTUs = 5,400

Updated: May 31, 2013